

PROCEEDINGS
OF THE
GENERAL MEETINGS FOR SCIENTIFIC BUSINESS
OF THE
ZOOLOGICAL SOCIETY OF LONDON.
(January to April, 1907.)

January 15, 1907.

Dr. J. ROSE BRADFORD, F.R.S., Vice-President,
in the Chair.

The Secretary read the following report on the additions that had been made to the Society's Menagerie in November and December 1906:—

The registered additions to the Society's Menagerie during the month of November were 173 in number. Of these 105 were acquired by presentation and 23 by purchase, 35 were received on deposit, 3 in exchange, and 7 were born in the Gardens. The total number of departures during the same period, by death and removals, was 177.

Amongst the additions special attention may be directed to:—

An adult male Mandrill (*Papio maimon*), the first full-sized example of this species exhibited in the Gardens, deposited on Nov. 30th.

A young female Hippopotamus (*Hippopotamus amphibius*) from the Niger, purchased on Nov. 1st.

A Persian Stag (*Cervus maral*), presented on Nov. 13th by Mr. Carl Hagenbeck.

A Kashmir Stag (*Cervus cashmiriensis*), presented on Nov. 22nd by H.G. the Duke of Bedford, K.G., P.Z.S.

A Collection of 47 Birds, including, among other interesting species, a Toucan (*Aulacorhamphus sulcatus*), new to the Collection,

and a Sun-Bittern (*Eurypyga helias*) from Venezuela, presented on Nov. 27th by Capt. A. Pam, F.Z.S.

The registered additions to the Society's Menagerie during the month of December were 150 in number. Of these 67 were acquired by presentation and 16 by purchase, 61 were received on deposit, 2 in exchange, and 4 were born in the Gardens. The total number of departures during the same period, by death and removals, was 207.

Amongst the additions special attention may be directed to :—

A pair of Siberian Dholes (*Cuon alpinus*) from Thian Shan, received in exchange on Dec. 2nd, new to the Collection.

A Cape Hunting-Dog (*Lycan pictus*) from South Africa, purchased on Dec. 1st.

An Addax Antelope (*Addax naso-maculatus*) from North Africa, presented by H.G. the Duke of Bedford, K.G., P.Z.S., on Dec. 18th.

A Bubaline Hartebeest (*Alcelaphus bubalinus*), and a hybrid between Père David's Deer (*Elaphurus davidianus*) and the Red Deer (*Cervus elaphus*), deposited on Dec. 29th.

A new Monkey from the Ituri Forest.

Mr. Oldfield Thomas, F.R.S., F.Z.S., exhibited a Monkey which had been obtained in the Ituri Forest, Upper Congo, during the recent Ruwenzori Expedition, and gave the following description of it :—

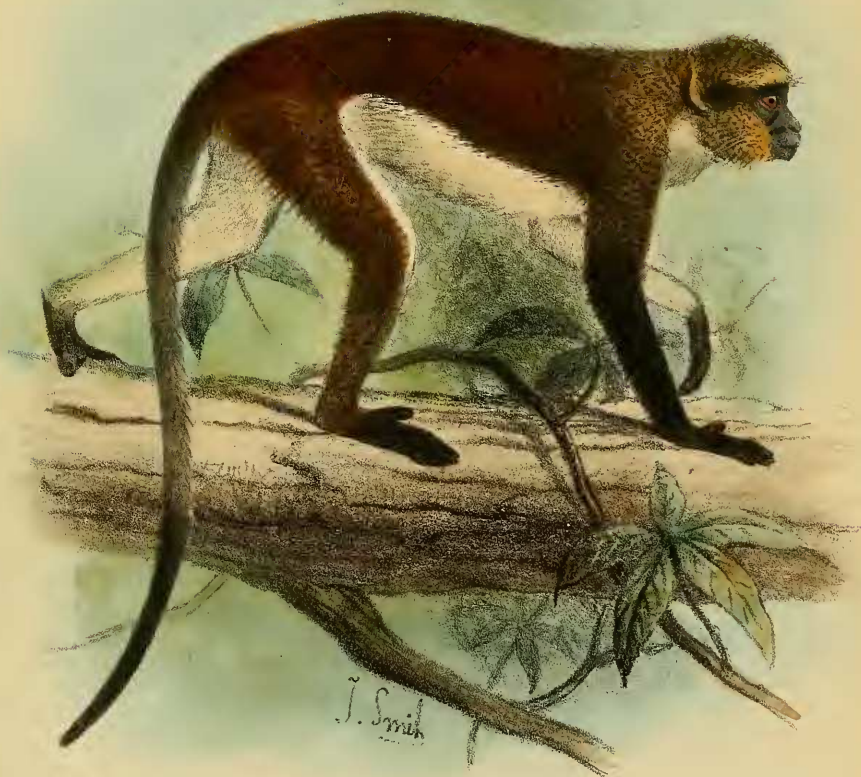
CERCOPITHECUS DENTI Thos.* (Plate I.)

Abstr. P. Z. S. 1907, p. 1 (Jan. 22, 1907).

A member of the *campbelli-mona* group, but not darkened on the posterior back and hind limbs, and with a very sharply contrasted white belly.

Upper surface of head and neck olive-grey, the usual light frontal band present but not conspicuous. Back dark grizzled chestnut-brown (nearest to "burnt-umber" of Ridgway); colour of rump not darker, but, on the contrary, passing gradually into the paler tone of the hips and hind legs. Under surface from chin to anus, and inner sides of limbs to wrists and ankles, clear creamy-white, very sharply defined from the darker colour, not only on the limbs, as in *campbelli* and others, but also along the flanks, where the white rises nearly halfway up the lateral aspect of the animal. Ears with short yellowish tufts rising from their inner surfaces. Outer sides of fore limbs deep black from elbows. Hind limbs grizzled yellowish olive, lighter than the back, down to and including the ankles, the metatarsals and toes black. Tail indistinctly blackish above at base, then dull greyish white for two-thirds its length, darkening again to black on its terminal third.

* [The complete account of the new species described in this communication appears here; but since the name and preliminary diagnosis were published in the 'Abstract,' the species is distinguished by the name being underlined.—EDITOR.]



J. Smit del. et lith.

Bale & Daniellson, Lith. imp.

CERCOPITHECUS DENTI.